

Directions to Castle Mountain (15th Historical Conference) from the North.



These directions assume that you have driven towards Sydney along the F2 Freeway from the North. Look for the sign indicating a distance of 79kms to Sydney.

Note: After the Freeway exit there is no fuel until you get to Wisemans Ferry (73kms away). Be sure to have adequate fuel before proceeding.

Note: Webbs Creek Road Wisemans Ferry can be found in most GPS units.



At the Sign 17kms to Peats Ridge & 79kms to Sydney,

SET THE TRIP METER TO ZERO.

2.5km

Sign saying 2kms to Peats Ridge Rd

.



Take the exit to the left onto Peats Ridge Road



Directions to Castle Mountain (15th Historical Conference) from the North.



Veer left onto the Wisemans Ferry Road Exit.

14.7km

Turn hard right onto Wisemans Ferry Road, and continue along under the bridge.

18.0km

At the intersection with the stop sign continue through, staying on Wisemans Ferry Road.

NOTE WELL:-This road is bitumen, but it is a little rough in places. Also, although the speed limit is 80km/h, there are spots where sharp bends are not signposted. Take care on this road. Some drivers may feel that a speed of 60km/h is more appropriate.



Directions to Castle Mountain (15th Historical Conference) from the North.

45.7km

Proceed through Spencer Village. There is a coffee shop and a bottle shop here, but both are small.

61.0km

Wombat Store, café and snacks on your left



Stop at the ferry hold line and wait to be instructed to board the ferry. The Ferry operates 24hrs a day. Board the ferry and enjoy the trip!

72.5km

Exit the ferry and turn left. Follow this road up through the town of Wisemans Ferry.

Directions to Castle Mountain (15th Historical Conference) from the North.

73.4km

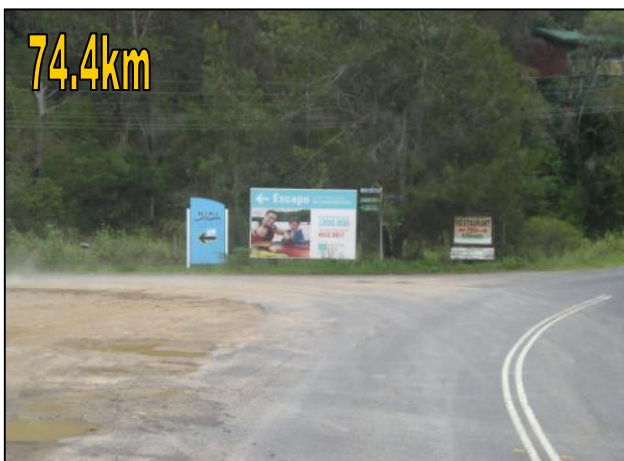
At the Police Station turn right and head down River Road.
DO NOT turn left and head up the hill



Stop at the ferry hold line and wait to be instructed to board the ferry.
The Ferry operates 24hrs a day.
Board the ferry and enjoy the trip!



Enjoy the Ferry trip. It's very pretty.....



After exiting the ferry take the first turn on the left. You will see a sign here directing you...



Directions to Castle Mountain (15th Historical Conference) from the North.



Turn right onto Webbs Creek Road. You will see another sign here directing you. Please keep in mind that these dirt roads service a number of private homes.

Webbs Creek Road is a dirt road, but is well maintained and is of high quality. Keep your speed down to avoid creating dust & up-setting the locals.



Enter the Castle Mountain site through the main gates. Note the 30km/h speed limit.



Take the left fork and proceed over the steel span bridge. NOTE the 10km/h speed limit

Drive another km and pull up at the registration desk on your left as you drive in, register, then start enjoying conference 2009!!!